

GINO'S SCHOOL OF WINE

2009 Fall Wine Harvest California & Italian Grapes



*Learn The Art And Science
Of Creating And Bottling Your
Own Private Label Wine.*

Gino's School Of Wine
Winemaking Facility Address:
839-13th Street
Hammonton, N.J. 08037
Phone: (609)-561-8199
Web: www.ginosschoolofwine.com
Email: info@ginosschoolofwine.com

How It Works

At Gino's School Of Wine you are the winemaker. You will learn how to make wine in a hands-on interactive setting. Our state of the art winemaking facility has the latest wine-making equipment and our staff will guide you in the steps to produce quality, award winning wine.

How do you choose what type of wine to make? Please refer to the Wine Menu section of this publication (pages 12 to 14) for choices or sit down with one of our winemakers for recommendations.

Once you decide what variety of wine you want to make the winemaking process is divided into four sessions. Each session takes approximately one to two hours.

Session 1: Crushing

Grapes are crushed and destemmed. If you are making a white wine you will also press. If making a red wine the skins are left to soak in the juice.

Session 2: Pressing

The primary fermentation stage in winemaking usually takes around one to two weeks. During this time, yeast will transform the majority of the sugars in the grape juice to ethanol, which is alcohol. After primary fermentation you will press your grapes and transfer it to your barrel or stainless steel tank.

Session 3: Racking

Around 5 months after pressing you will rack your wine. Wine is transferred from your barrel or tank into another vessel and separated from the lees (sediment). The barrel or tank is cleaned and then the wine is transferred back.

Session 4: Bottling

Around 4 months after racking you will bottle, cork, and label your finished wine. One barrel of wine yields around 240 bottles of wine (750 ml).

“Great wines begin in the vineyard...”

The grapes we source for you are also shipped to the finest wineries in the United States and Italy. We are sourcing grapes from the renowned California wine regions of Lodi, Mendocino County, Suisun Valley, and Amador County. Our Italian grapes are sourced from a family owned winery in Apuglia, Italy. These grapes are shipped cold and produce wines of exceptional flavor and quality. The vineyards are operated by grape growers who have been in the business for several generations. All varietals are guaranteed full ripe fruit for the deepest color and flavor possible. These grapes produce award winning wines.



Grape Regions

Lodi, California

Lodi-American Viticultural Area (AVA)

The Lodi Appellation is a federally designated American Viticulture Area recognized for the distinctive quality of its wines. Located directly east of San Francisco at the edge of the Sacramento River Delta, the Lodi appellation is noted for its classic Mediterranean climate and its distinctive sandy soils that provide the perfect environment for the production of world-class wines.

Lodi is home to over 70 wineries, hundreds of "Lodi" labeled wines, and thousands of acres of premium wine grapes. Its growers and vintners combine the best of tradition with the most modern advances of science and technology. It leads the industry in sustainable viticultural practices, preserving the land for generations to come. It is a region where a new generation of growers is rediscovering its rich heritage, and setting out to produce world-class wines that rival the best that California has to offer.



Sierra Foothills-Amador County, California

The Sierra Foothill wine region of the central California valley is generally east of San Francisco and includes the El Dorado and Amador County wine growing regions. More than 100 wineries are located in this area with vineyards generally located between the elevation of 1,500 to 3,000 feet. The shallow, mountainside soils create moderate stress on the vines, producing low to moderate yields and high quality. The region has rolling, sun-drenched hillsides, warm climate, and volcanic, decomposed granite soils, which are ideal conditions for producing quality wine grapes.



Amador Vineyard in Spring

Grape Regions

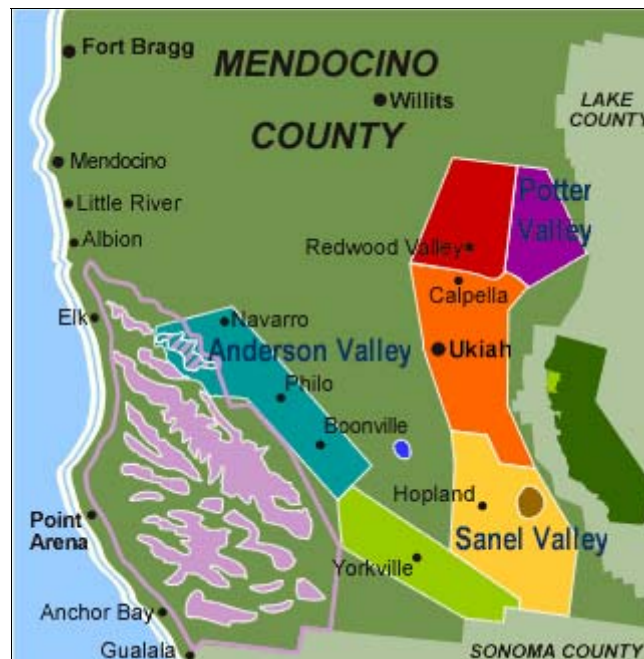
Mendocino County, California Potter Valley-American Viticultural Area (AVA) Anderson Valley-American Viticultural Area (AVA) Sanel Valley Wine Region

Located directly north of Sonoma County and about 90 miles north of San Francisco, the Mendocino wine region is bounded by California's Coastal Mountain Range, the Pacific Ocean and the great northern redwood forests. Mendocino County is highly diverse with coastal influences, mountaintops, river valleys, and inland regions that have either Mediterranean like climates or like Northern Europe.

Potter Valley, northeast of Ukiah, and directly east of Redwood Valley is at the headwaters of the Russian River's East Fork. The valley is at about 1,000 feet elevation. Great day-night temperature variations separate Potter Valley from other growing areas in Mendocino. Mid-day, this inland valley can be truly hot, but at night temperatures plummet and under such conditions varieties such as Pinot Noir and Merlot flourish, developing strong, refined character. The high water table of the Eel River watershed is an added bonus.

Anderson Valley is one of California's coolest growing areas and now ranks with the top Pinot Noir regions in North America. While production is not huge, quality is soaring, as rising-star winemakers join home-grown stalwarts in producing sleek, powerful Pinots. Cutting laterally through the coastal range rather than lying between ridges, the west or "deep end" of the Anderson Valley is only a few miles from the cold Pacific Ocean, while the town of Boonville is some 20 miles to the east. Such unique geography results in a wide diurnal range, with daily high and low temperatures occasionally diverging 40 or 50 degrees. This enables Pinot Noir growers to keep acid development in line with sugar and flavor formation through long, warm Indian summers.

Sanel Valley is a southern Mendocino growing area surrounding the town of Hopland on the Russian River. It is scarcely 6 miles long and at most 2 miles wide. Most Sanel Valley vineyards are on the river plain. The gravelly soils and well drained vineyards produce outstanding Sauvignon Blanc, Chardonnay, Cabernet Sauvignon, and Syrah. Sanel Valley's AVA application is pending.



Grape Regions

Suisun Valley, California

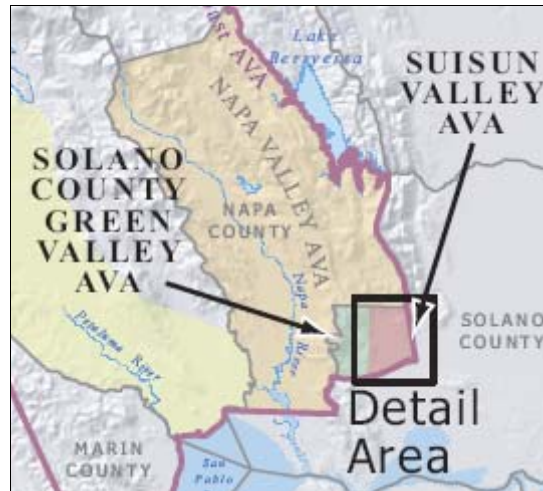
Suisun Valley-American Viticultural Area (AVA)

The Suisun Valley lies within the southern end of two ranges of the Coast Range, the Vaca Mountains to the east and the Mt. George Range to the west. Suisun Valley terminates in the south at the marshlands of Suisun Bay. To the north Suisun Valley rolls up into Wooden Valley at the Napa County line.

Varietal grape growing for premium winemaking in California's Suisun Valley, has its roots dating back to the 1800's, and represents over a century of continuous viticultural activity.

Benefiting from a Mediterranean climate, fertile soils and significant marine air influences during summer months, Suisun Valley growers have incorporated new trellising systems with changes in varietal and clone selections, to continue quality enhancement in wine grape production.

Today approximately 3,000 acres are under vine in the Suisun Valley and their fruit continues to be sourced by numerous Napa and Sonoma wineries.



Apulia (Puglia in Italian), Italy

Apulia is a region in southeastern Italy bordering the Adriatic Sea in the east, the Ionian Sea to the south-east, and the Strait of Otranto and Gulf of Taranto in the south. Its southern portion known as Salento, a peninsula, forms a high heel on the "boot" of Italy. Apulia is agriculturally rich, producing not only a huge variety of grapes, but also olive trees and wheat. Apulia has rocky soils, dry climate, and large amounts of sunlight that are perfect for growing quality grapes.



Our Growers

Delta Packing Lodi, California

Delta Packing is one of the premier wine grape packers and wine grape growers in the San Joaquin Valley. Carl Elkins and Berton Costamagna currently work together in managing the day-to-day operations of Delta Packing.

Delta Packing has established long term relationships with over 70 growers located primarily in the AVA regions of Lodi, Amador, Paso Robles and Napa. In addition to working with California growers, Delta Packing and the Costamagna family have been farming throughout California's San Joaquin valley for over three generations. Delta Packing now oversees over 10,000 acres of grapes, cherries, walnuts, and tomatoes focusing on using sustainable and organic farming techniques. The family believes in being good stewards of the soil to ensure that the farming operation can be passed on to future generations.

Delta Packing is centrally located in the Zinfandel capital of Lodi, 35 minutes south of Sacramento and 90 miles east of San Francisco, just west of the Sierra Nevada. The nearby Sacramento River Delta brings cool nights, along with our deep sandy clay soils, making it ideal for grape growing. Lodi has more than 75,000 acres of grapes grown by over 750 farmers. Lodi is the leading producer of all California wine districts for Cabernet Sauvignon, Merlot, Chardonnay, Sauvignon Blanc, and Zinfandel. Lodi is home to five major wineries and over 60 "boutique" wineries. More than 60 other leading wineries source grapes from Lodi. Lodi has a long history of good old days that seem to be getting better and better.



Sutter Creek & Sutter Ridge Vineyards Sierra Foothills-Amador County, California

Sutter Creek And Sutter Ridge Vineyards were established by John L. Bree who is himself a third generation California grape grower. His son John H. and his daughter Gretchen have joined the family business ensuring the continuity of high quality grape production. The vineyards are located in the heart of Amador County in the historic Sierra Foothills wine region.

Owned by one of several long-time Amador County winemaking families, Sutter Creek and Sutter Ridge Vineyards produces Barbera, Grenache, Merlot, Petite Sirah, Cabernet Sauvignon, Cabernet Franc, Zinfandel, Sangiovese, and Chardonnay.

John L. Bree, the winemaker, has had a long history of creative distinctive wines and introducing new varieties to the Foothills. His son, John Junior is the vineyard manager.



Brutocao Vineyards Mendocino County, California Anderson Valley, California Sanel Valley, California

Brutocao Vineyard's roots go back three generations to Venice. Today, the family still blends their Italian heritage with their rural agricultural lifestyle to grow some of California's finest grapes.

All fruit is carefully hand picked using state of the art sustainable farming methods to ensure quality fruit. The fruit that is grown at Brutocao goes into many Napa and Sonoma wineries.

Gino's School Of Wine sources Pinot Noir grapes from Brutocao Vineyard's ranch in the Anderson Valley and Syrah and Chardonnay from their Sanel Valley Vineyard. The Sanel Valley Vineyard is over 600 acres of grapes located in Hopland on the Russian River.

Our Growers

Iron Oak Vineyards Mendocino County, California Potter Valley, California

Bill Domenichelli owns Iron Oak Vineyard in Potter Valley. He is a third generation Mendocino County grape grower who meticulously farms Iron Oak Vineyard to produce beautifully concentrated grapes such as Merlot and Pinot Noir. Bill is an artisan grower who oversees the pruning and leaf stripping at Iron Oak to create a perfectly manicured vineyard offering fruit with excellent balance.

His vines are cultivated at an elevation of 2200 feet. They are grown in depleted red volcanic soil on a steep hillside. They only yield about two to three tons per acre.

Iron Oak Vineyard is famous for its Merlot. This merlot enjoys prolonged time on the vine and is always the last fruit to be harvested, often coming in at the end of October. Iron Oak Merlot is planted to an old Mondavi clone. This clone yields small concentrated berries, which when grown in Iron Oak's high mountain location produce more tannins than are typical of California merlot. These tannins contribute to the structure of the Iron Oak Ranch Merlot and help to balance the complex layers of lavender, black cherry and spice.



Lanza Vineyards Suisun Valley, California

The Lanza Vineyards is truly a family owned and operated vineyard with four of the owner's sons and one grandson working at the vineyard today. Two of the brothers, Larry and Ken manage the vineyards together, growing grapes that their brothers Ron and Rick make into wine.

The property is over 300 acres and spans four microclimates between I-80 and the end of the valley. This is a tremendous asset enabling the Lanzas to plant different varieties in the areas best suited for each type of vine. Chardonnay is planted in the south because it's cooler and there is more wind. Cabernet Sauvignon is planted further north where the soil is rocky and there is less wind. Larry Lanza writes, "Each passing season only increases my respect for the ecology and aesthetics of this valley. The more you understand this land, the more you can get out of it."

Lanza Vineyards grows Cabernet Sauvignon, Merlot, Napa Gamay, Syrah, Petite Sirah, Pinot Noir, Zinfandel, Chardonnay, Pinot Grigio, Riesling, and Sauvignon Blanc.

Working together, the Lanza family has completed a transition to the exclusive production of estate wines, with a range of varietals and rare classics to meet every taste.



Tenuta Dei Cavaliere Apulia (Puglia in Italian), Italy

Tenuta Dei Cavaliere is a family owned vineyard and winery in the heart of the Apulia region in Italy. The family follows traditional methods in grape growing and winemaking and they personally take care of each step of the grape growing process.

The vineyard is close to 100 acres and grows Cabernet Sauvignon, Lambrusco, Montepulciano, Merlot, and Trebbiano.

Red Grape Varietals

ALICANTE BOUSHET

Alicante Bouschet is a wine grape variety that has been widely cultivated since 1866. It is a cross of Grenache with Petit Bouschet (itself a cross of the very old variety Teinturier du Cher and Aramon). Alicante is a teinturier, a grape with red flesh. It is the only teinturier grape that belongs to the *Vitis vinifera* family. It's deep color makes it useful for blending with light red wine. It was planted heavily during Prohibition in California for export to the East Coast. This grape makes a dry, dark, full bodied wine.

BARBERA

Barbera is believed to have originated in the hills of Monferrato in central Piemonte, Italy where it has been known from the thirteenth century. In California, Barbera is one of the most successful of the Piemontese grapes to be adapted in the state, with over 8000 acres of plantings. This grape produces a red, deep colored, full bodied wine and produces a dry somewhat tannic wine that ages well and softens with time. When young, the wines offer a very intense aroma of fresh red and blackberries. In the lightest versions notes of cherries, raspberries and blueberries and with notes of blackberry and black cherries in wines made of more ripe grapes. Oaking this wine provides for increased complexity, aging potential, and hints of vanilla notes.

CABERNET SAUVIGNON

Cabernet Sauvignon is one of the most widely planted grape varieties in the world. Wine made from Cabernet Sauvignon is generally stronger than Merlot and full flavored. The Cabernet Sauvignon grape has a thick skin that results in wines that can be high in tannin which provides structure and the ability to age. This grape is strongly associated with the red wines of Bordeaux and is blended with Merlot, Cabernet Franc, Petit Verdot, and Malbec. The aroma of Cabernet Sauvignon has been described as chocolate, ripe jammy berries, oak, pepper, earth, violets, blackcurrant, spice, and cedar.

CABERNET FRANC

Cabernet Franc is believed to have been established in the Libournais region of southwest France sometime in the 17th century. Cabernet Franc shares many of the same phenolic and aroma compounds as Cabernet Sauvignon but with some noticeable differences. Cabernet Franc tends to be more lightly pigmented and produces wines with the same level of intensity and richness. Cabernet Franc tends to have a more pronounced perfume with notes of raspberries, black currants, violets and graphite. It is often characterized by a green, vegetal strike that can range from leaves to green bell peppers. It has slightly less tannins than Cabernet Sauvignon and tends to produce a wine with a smoother mouth feel.

CARIGNANE

Carignane is believed to have originated in Spain in the Aragon region and was historically a component of neighboring Rioja's red wine blend. Predominately used in blending this grape is full of tannin and is heavy bodied with medium acidity and color.

GRENACHE

Grenache is one of the most widely planted red wine grape varieties in the world. It is generally spicy, berry-flavored and soft on the palate with a relatively high alcohol content, but it needs careful control of yields for best results. It tends to lack acid, tannin and color, and is usually blended with other varieties such as Syrah and Carignane. Grenache is also used to make rosé wines in France and Spain and the high sugar levels of Grenache have led to extensive use in fortified wines such as Port.

LAMBRUSCO

Lambrusco is the name of both a red wine grape and an Italian wine made principally from the grape. The grape itself is not particularly sweet but many of the sweet Lambrusco are made by either partial fermentation or with the addition of the sweeter Ancellotta grapes to the blend. When not fermented sweet, the Lambrusco grape is capable of producing a dry wine with strawberry notes and a slight bitter finish. The wine is noted for high acidity and berry flavors.



Red Grape Varietals

MERLOT

Merlot is a red wine grape that is used as both a blending grape and for varietal wines. Merlot based wines usually have medium body with hints of berry, plum, and currant. Its softness and "fleshiness", combined with its earlier ripening, makes Merlot a popular grape for blending with the sterner, later-ripening Cabernet Sauvignon, which tends to be higher in tannin. Along with Cabernet Sauvignon, Cabernet Franc, Malbec and Petit Verdot, Merlot is one of the primary grapes in Bordeaux wine where it is the most widely planted grape.

MONTEPULCIANO

Montepulciano is a type of wine grape as well as a type of red wine made from these same grapes. It is typically a fruity, dry wine with soft tannins, and as such is often consumed young. Montepulciano makes a beautifully deep ruby red wine that is clear and brilliant with purplish shades. Over time the wine turns to garnet red during its maturation.

PETITE SIRAH

Petite Sirah is a variety of red wine grape primarily grown in California, Australia, France, and Israel. Petite Sirah is also called Durif. These grapes produce a deep colored, robust, peppery wine that packs plenty of tannin and has good aging ability. Compared to Syrah, the wine is noticeably more dark and purplish in color.

PETIT VERDOT

Petit Verdot is a variety of red wine grape, principally used in classic Bordeaux blends. It ripens much later than the other varieties in Bordeaux, often too late, so it fell out of favor in its home region. When it does ripen, it is added in small amounts to add tannin, color and flavor to the blend. It has attracted attention among winemakers in the New World, where it ripens more reliably and has been made into single varietal wine. It is also useful in 'stiffening' the mid palate of Cabernet Sauvignon blends.

PINOT NOIR

The name is derived from the French words for "pine" and "black" alluding to the varietals' tightly clustered dark purple pine cone-shaped bunches of fruit. Originally from France where it is used in all of the great red burgundies. This grape produces a wine that is clear, brilliant, and medium to deep red in color. It is rich, velvety, and full of flavors such as cherries, raspberries, and strawberries.

RUBY CABERNET

Ruby Cabernet is a cross between Cabernet Sauvignon and Carignane created in 1936 by Dr Harold Olmo at UC Davis in California. Ruby Cabernet can produce wines with good color and a pleasant cherry flavor and is also used in blending.

SANGIOVESE

Sangiovese appears to have originated in Tuscany, where it was known by the 16th century but has been widely planted in California. At least fourteen Sangiovese clones exist, of which Brunello is one of the best regarded. It is most famous as the main component of the Chianti blend in Tuscany. Young Sangiovese has fresh fruity flavors of strawberry and a little spiciness, but it readily takes on oaky, even tarry, flavors when aged in barrels.

ZINFANDEL

Zinfandel is a variety of red grape planted in over 10 percent of California vineyards. The grapes typically produce a robust red wine. The grapes can have a high sugar content which will ferment into a high level of alcohol. Styles include: a light spicy flavor with a berry-like aroma, or a full bodied, oak aged, berry-like, dark colored.



White Grape Varietals

CHARDONNAY

Chardonnay originated in the Burgundy wine region of eastern France but is now grown wherever wine is produced, from England to New Zealand. Chardonnay flavors have been described as citrus and melon and are made with and without barrel aging. Chardonnay is also produced using malolactic fermentation which imparts a buttery flavor. Chardonnay is a versatile grape producing a soft, fruity wine without oak aging and aromas of smoke, vanilla, and caramel with barrel aging.

FRENCH COLOMBARD

French Colombard is possibly the offspring of Gouais Blanc and Chenin blanc. This grape provides backbone, due to its natural acidic character, for white blends. French Colombard can produce a crisp, moderately dry, spicy wine.

MUSCAT CANELLI

The Muscat family of grapes is widely grown for wine, raisins, and table grapes. Colors range from white to almost black, but almost always have a pronounced sweet floral aroma. Muscat is perhaps the oldest domesticated grape varieties due to the breadth and number of varieties. Muscat Canelli produces outstanding sweet dessert wines and also forms the basis of Asti Spumante.

PINOT GRIGIO

Pinto Grigio also known as Pinot Gris is thought to be a mutant clone of Pinto Noir. Pinot Grigio usually has grayish-blue fruit but can also have a brownish pink, black, or even white appearance. The grapes grow in pinecone shaped clusters and wines produced from these grapes vary in color from light shades of pink to copper to a deep golden yellow. The grape grows best in cool climates, and matures relatively early with high sugar levels. This can lead to either a sweeter wine, or, if fermented to dryness, a wine high in alcohol.

RIESLING

Riesling is grown historically in Germany, The Alsace region of France, Austria, and northern Italy. Riesling can be produced into dessert wines by late harvest, through evaporation caused by the fungus *Botrytis Cinera* or "noble rot", or by freezing (ice wine). These wines have high sugar content, high acid, with great flavor. Rieslings are also made into non-dessert wines that range from dry to sweet. Some have crisp lightness with detectable peach aromas. Riesling's naturally high acidity and range of flavors make it suitable for extended aging.

SAUVIGNON BLANC

The Sauvignon Blanc grape originated in the Bordeaux region of France and has a green skin. The grape can produce crisp, dry, and refreshing white varietal wines. Sauvignon Blanc also is a component of the dessert wines Sauterne and Barsac. Sauvignon Blanc's from California tend to be either one of two styles. The first a fruity styles with tropical fruit undertones or a barrel aged style with more rounder melon notes.

VIOGNIER

Viognier is believed to have been brought to the Rhone region of France by the Romans and to have originated in Dalmatia. The best Viognier wines are known for their powerful fruit and floral aromas. Viognier typically produces medium bodied wines with relatively high acid content. This wine is best drunk young since aging allows the fruit and aromatic strength of Viognier to fade away.

WHITE MALVASIA

The White Malvasia grape is thought originally to be of Greek origin. The grape is used to produce white table wine, dessert wines, and fortified wines as well as in blending. White Malvasia grapes can produce dry wines with tastes of peach and aromas of musk and almonds with good acidity. White Malvasia as a sweet wine can have a nutty character.



Grape Blends

At its most basic, vintners blend wine made from different grapes in order to add more complexity to the flavor and texture of a wine. The goal of blending wine made in different vintages is more to balance out the flavor characteristics.

Some wine blends are made from classic recipes handed down from generation to generation. Other vintners create brand new blends in an attempt to produce a new and exciting wine that has flavor characteristics like nothing else on the market.

Red Wine Blends

Bordeaux Blends

In France, the only grapes allowed for use in a bottle labeled "Bordeaux" are:

- * Cabernet Sauvignon
- * Merlot
- * Malbec
- * Petite Verdot
- * Carmenere
- * Cabernet Franc

A typical Bordeaux Blend will have either Cabernet Sauvignon or Merlot as the primary grape and other grapes will make up from 15% to 50% of the blend. When a winemaker chooses to blend these varieties the aim is to produce a more elegant, complex, sophisticated wine that reflects the character and breed of the great wines of Bordeaux.

Super Tuscan Blends

Super Tuscans got their start in the 1970s when Italian wine makers decided to create a new exciting red wine. Italy has strict wine blending laws according to the Denominazione di Origine Controllata e Garantita or DOCG. Producers of Super Tuscans decided to break the rules and make a new wine blended from grapes of their choosing such as:

- * Sangiovese
- * Cabernet Sauvignon
- * Cabernet Franc
- * Syrah
- * Merlot
- * Petite Verdot

The intense fruit and deep color of Cabernet and the other Bordeaux grapes are well suited for blending with Sangiovese.

Chianti

Chianti is a red Italian wine produced in Tuscany. In Italy the blend for Chianti usually is around 75% Sangiovese, up to 10% Canaiolo and up to 20% of any other approved red grape variety such as Cabernet Sauvignon, Merlot or Syrah. White grapes can also be blended in.

The flexibility in the blending recipe for Chianti accounts for some of the variability in styles among Chiantis. Lighter bodied styles will generally have a higher proportion of white grape varieties blended in, while Chiantis that have only red grape varieties will be fuller and richer.

Choose Your Own Blend

At Gino's School Of Wine you are the winemaker. If you would like to create your own blend please let us know and we will work with you.



Wine Menu

2009 Fall Harvest

Lodi, California-Red Varietals

BARBERA	\$1,800.00
CABERNET SAUVIGNON	\$1,945.00
CARIGNANE	\$1,550.00
GRENACHE	\$1,550.00
MERLOT	\$2,000.00
PETITE SIRAH	\$2,000.00
RUBY CABERNET	\$1,800.00
PINOT NOIR	\$2,450.00
ALICANTE BOUSHET	\$1,800.00
SANGIOVESE	\$1,900.00
SYRAH	\$1,900.00
ZINFANDEL	\$2,000.00

Lodi, California-Red Blends

CABERNET SAUVIGNON & ZINFANDEL	\$2,000.00
80% Cabernet Sauvignon and 20% Zinfandel. The addition of Zinfandel will insure good color and will add more flavor to the wine.	

Bordeaux Style Blends

MERLOT AND CABERNET SAUVIGNON	\$2,000.00
80% Merlot and 20% Cabernet. This blend will add color to the Merlot.	
CABERNET SAUVIGNON AND MERLOT	\$2,000.00
80% Cabernet and 20% Merlot. Blending Merlot with Cabernet will soften the wine.	
SINATRA BLEND	\$2,100.00
33% Cabernet, 33% Merlot, and 33% Cabernet Franc.	
CABERNET SAUVIGNON AND PETIT VERDOT	\$2,100.00
50% Cabernet and 50% Petite Verdot.	

Super Tuscan Style Blends

SANGIOVESE AND CABERNET SAUVIGNON	\$2,100.00
70% Sangiovese and 30% Cabernet Sauvignon.	
SANGIOVESE AND MERLOT	\$2,100.00
70% Sangiovese and 30% Merlot	
CHATEAUNEUF DU PAPE STYLE	\$1,900.00
This wine is a mixture of principally Grenache, which gives mellowness and alcohol, Syrah, and Alicante.	
BARBERA BLEND	\$2,000.00
A blend of Barbera, Nebbiolo, and Petite Syrah.	
ZINFANDEL AND SYRAH	\$2,000.00
75% Zinfandel and 25% Syrah. Produces a nice heavy bodied dry red wine.	



Wine Menu

2009 Fall Harvest

Lodi, California-Red Blends

CHIANTI **\$1,900.00**

A strong, bold, red wine that goes well with well-seasoned foods. A blend of Sangiovese, Black Malvasia, Barbera, Petite Syrah, and Cabernet.

PIEDMONT BLEND **\$1,825.00**

A great blend of Nebbiolo which is rich in color and Barbera which is lighter and full of flavor. This is one of the finest wines in the Piedmont region of Italy.

ALICANTE AND MUSCAT **\$1,650.00**

90% Alicante and 10% Muscat. An Old Timers favorite. A dry dark red wine with a kick.

CABERNET SAUVIGNON AND PETITE SYRAH **\$2,100.00**

70% Cabernet and 30% Petite Syrah. This combination produces a robust dry red wine with a kick. For the dry wine lover.

ZINFANDEL, SYRAH, BARBERA, DOLCETTO **\$2,100.00**

50% Zinfandel, 30% Syrah, 15% Barbera, 5% Dolcetto.

Lodi, California-Blush

MUSCAT AND ALICANTE (BLUSH) **\$1,650.00**

80% Muscat and 20% Alicante. Another Old Timers favorite that produces a blush wine.

Lodi, California-White Varietals

CHARDONNAY **\$1,950.00**

WHITE MALVASIA **\$1,700.00**

VIOGNIER **\$1,975.00**

PINOT GRIGIO **\$2,050.00**

RIESLING **\$1,800.00**

SAUVIGNON BLANC **\$1,800.00**

FRENCH COLOMBARD **\$1,575.00**

MUSCAT **\$1,600.00**

Sierra Foothills-Amador County, California, Red Varietals

BARBERA **\$2,100.00**

CABERNET FRANC **\$2,100.00**

CABERNET SAUVIGNON **\$2,100.00**

GRENACHE **\$2,100.00**

MERLOT **\$2,100.00**

PETITE SIRAH **\$2,100.00**

SANGIOVESE BRUNELLO CLONE **\$2,100.00**

SYRAH **\$2,100.00**

ZINFANDEL **\$2,100.00**

RED BLENDS **\$2,100.00**



Wine Menu

2009 Fall Harvest

Sierra Foothills-Amador County, California, White Varietals

CHARDONNAY \$2,100.00

Mendocino County, California, Red Varietals

CABERNET SAUVIGNON \$2,450.00

SYRAH \$2,450.00

MERLOT \$2,450.00

PINOT NOIR \$2,450.00

RED BLENDS \$2,450.00

Mendocino County, California, White Varietals

CHARDONNAY \$2,450.00

Suisun Valley, California-Red Varietals

CABERNET SAUVIGNON \$2,300.00

MERLOT \$2,300.00

PETITE SYRAH \$2,300.00

PINOT NOIR \$2,300.00

SYRAH \$2,300.00

ZINFANDEL \$2,300.00

RED BLENDS \$2,300.00

Suisun Valley, California-White Varietals

CHARDONNAY \$2,300.00

PINOT GRIGIO \$2,300.00

RIESLING \$2,300.00

SAUVIGNON BLANC \$2,300.00

Apulia, Italy, Red Varietals

CABERNET SAUVIGNON \$2,300.00

LAMBRUSCO \$2,300.00

MERLOT \$2,300.00

MONTEPULCIANO \$2,300.00

Apulia, Italy, White Varietals

TREBBIANO \$2,300.00



Details

Prices Include:

- Your grape order which makes around 240 bottles of finished wine.
- Use of professional winemaking equipment.
- Technical oversight.
- 10 month of wine storage.
- Materials and additives such as corks, capsules, and yeast.
- Bottles (750 ml, Green or Clear).

Items Not Included:

- Wine barrel for red wines. A 53 gallon American Oak barrel may be purchased for \$335.00 or rented for \$95.00
- Stainless steel tank for white wines. A stainless steel tank can be rented for \$85.00.
- Personalized Wine Labels – .45¢ a piece.
- New Jersey Division Of ABC fee of \$15.00 (required for all winemakers in your group.)

PAYMENT SCHEDULE:

50 % DUE AT CRUSHING (FIRST MEETING).

BALANCE DUE AT PRESSING (SECOND MEETING).

Billing Address:

Gino's School Of Wine
PO Box 72
Hammonton, NJ 08037

Contact Information

Phone: (609)-561-8199
Fax: (609)-561-3429
Web: www.ginosschoolofwine.com
Email: info@ginosschoolofwine.com

Prices are subject to change due to availability and market conditions.

